

## ► A Proven Performer

Flucon introduces our new, FDA approved, co-polyester alloy Nema 4 housings for your most demanding corrosive environments. The extraordinary toughness, superior chemical resistance and excellent impact strength creates a NEW Generation of PIDs.

## Switches

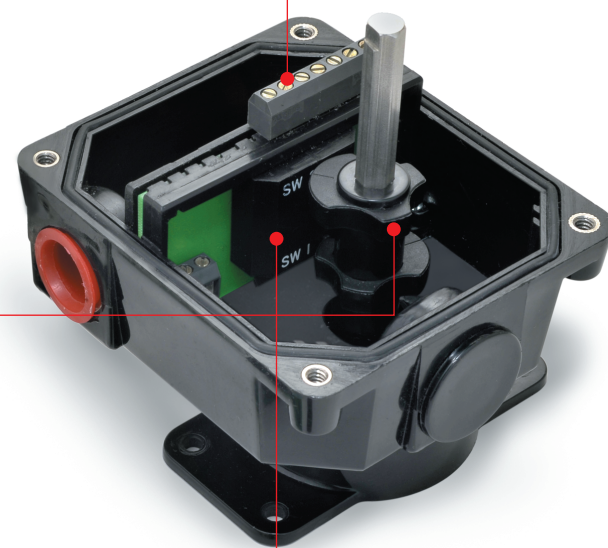
All switch configurations, mechanical, inductive, SPDT, DPDT Thermetically sealed proximity sensors, solenoid valves and analog feedback. Mechanical Switches 10 amp SPDT as standard, enclosed on a PCB board with no exposed wiring. Also available are .100 amp and gold plated SPDT switches for low power and intrinsically safe applications.

## Easy "Set and Forget" Cam Design

This patented setting system uses no mechanical devices (springs or screws) for adjustment. Senitec utilizes a unique internal leaf spring design, which precisely positions and LOCKS on to a splined shaft, which prevents calibration and life cycle inaccuracies. When needed, the cam system is easily adjusted using no tools.

## The "PrE2" Proximity Sensor

Encased in a Switch housing and epoxy Ackralite thermetically sealed, the "PrE2" proximity sensor provides the industry's foremost protection from moisture, shock and corrosive environments and electronic spikes that damage and shorten the life cycle capability of traditional PIDs. When accuracy, performance and reliability are critical the Flucon "PrE2" provides the answer.



## Flucon Automation Inc.

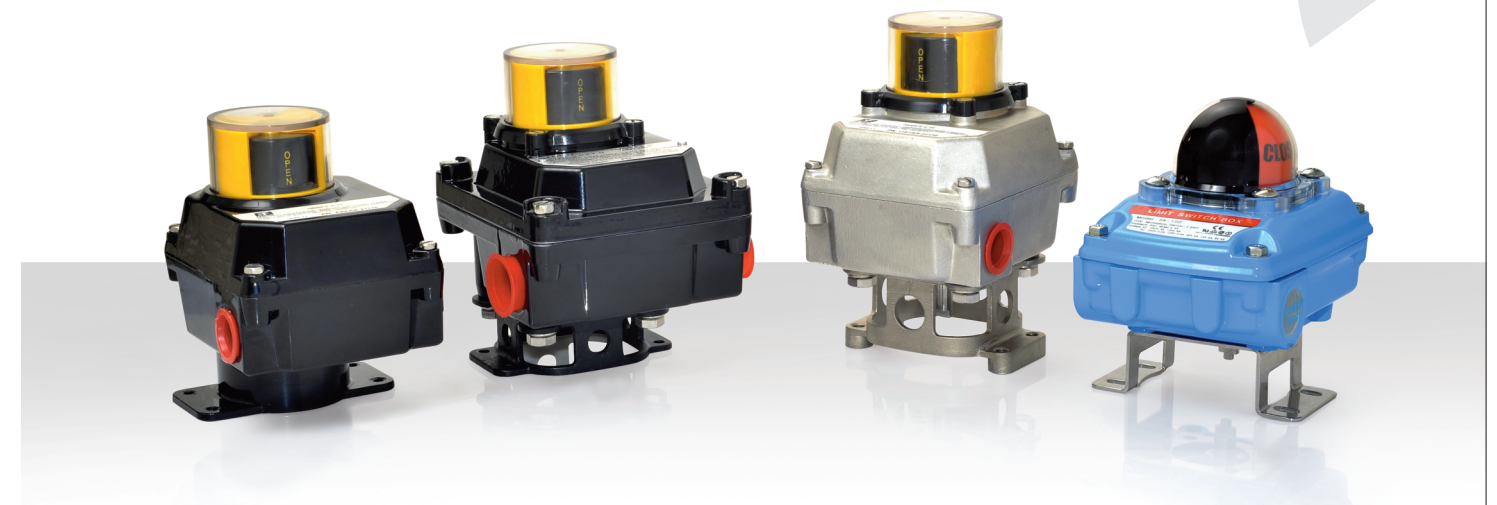
[www.fluconautomationinc.com](http://www.fluconautomationinc.com)

USA  
4304, Sulpher Spring Road,  
Murfreesboro, TN 37129 USA  
T +1-615 893 2668 F +1-615 893 5590 M +1 615 785 9040  
E [info@fluconautomationinc.com](mailto:info@fluconautomationinc.com)

India  
E-104-05, GIDC, Electronics zone, Sector-26,  
Gandhinagar-382 026 India  
T +91-79-2328 8532 F +91-79-2328 8531 M +91-98250 49522  
E [sales@fluconautomationinc.com](mailto:sales@fluconautomationinc.com)

Subject to Revision • Printed in India • [jkg@printography.co.in](mailto:jkg@printography.co.in)

# Limit Switch *FC 300/400 Series*



## ► Description

The FLUCON 300/400FC series Limit switch visual indicator is a mechanical device which graphically displays the angular displacement (rotary indication) of a quarter turn valve or any other device operating between 0° & 90°. The limit switch indicator represents a true indication of valve position. It is infinitely adjustable and delivers a 100% change of indication, displaying 90° of rotation by utilising an amplified mechanical drive.

## ► Integrated Characteristic

- Suitable for Rotary quarter turn actuator.
- Extremely vibration resistance design.
- Corrosion resistance aluminum diecast and powder coated.
- Bolts on visual position indicator is adjustable and waterproof.
- Easy to adjust cam, spring loaded splined cam. No need to adjust again after initial setting. Easy setting without tool.
- Dual cable entries.
- Captive cover bolts. No worry to loose bolts while cover opens.
- Easy mounting.
- *Optional position transmitter 4-20mA DC.*

## ► Application

The Flucon 300FC Limit Switches are used for visual indication and contact output of the Rotary quarter turn actuator and optionally get the 4-20mA DC with respect to the rotary valve movement.

## Used in :

- Petrochemical Processing Systems.
- Energy Management.
- HVAC Systems.
- Textile Processing Systems.
- Pharmaceutical Processing System.
- Paper & Pulp Handling Controls.
- Power Plant.
- Cement Industries.
- Fertilizer Industries.



Process Control Instruments

Valve Automation

Automated Industrial Equipments